



Manager Memos -by Curtis Kayton

Dear Customers,

Recently, the board of directors and I had a special planning meeting to discuss and review the objectives laid out in our budget and department workplans. It is good to take time to focus on specific items and projects to understand how they are building blocks for future progress. It is also eye opening to realize that some equipment items must be ordered more than one-year in advance just so you can get them in time to be ready for the next years' irrigation season. We have had a bucket truck ordered for nearly 3 years.....will it show up this year? All I will say is that it needs to!

Last month was the legislative conference of our statewide trade association the Nebraska Rural Electric Association. It was good to walk the halls of the Capitol renewing established relationships and making new ones. LB 837 is a bill of interest that would allow sub-district boundaries to split voting precincts if necessary to ensure equitable representation by elected board members. Currently, each CRPPD board member is elected at-large and represents approximately 560 ratepayers. This bill is currently awaiting advancement from the Natural Resources Committee.

Congratulations are appropriate for Senator Steve Erdman from Bayard representing Legislative District 47. His two-terms will be complete at the end of this session, and he has been a good ally of Public Power in Nebraska. So, from all of us at CRPPD thank you Senator!

The Bayard Substation project is ahead of schedule and new billing statements are being evaluated as we speak.

As always, we stand ready to respond to your needs and if you have questions feel free to stop in or call.



*Our Office Will Be Closed:
Friday, March 29th
In Observance of
Good Friday*

Energy Efficiency Credits

Energy Efficiency Credits are available on electric motors, electric heating, electric hot water heaters, and LED lights. Must be new installations only. and submitted within 90 days.

Certain standards of efficiency must be met to qualify depending on the type of electric equipment installed.

Some of the credits include:

- *Electric water heaters - \$50/unit new construction or replacing gas
- *Heat pumps-\$150-\$500/ton
15 SEER Minimum
- *Electric motors 10-500 hp \$8/hp
- *Old refrig and freezer going to be recycled
- *Clothes Dryers - \$30-\$90
- *Induction Cooktops 30" or larger, must be replacing gas
- *LED lights - lesser of 1/2 cost of lights or \$8 per lamp, 500 Lumens or greater
- *Electric trimmer, chainsaw, or pruner, electric blower or lawn-mower - 25% of cost, up to \$150
- *Whole House Fans - \$100
- *Smart Thermostats - \$25

Receipts are required.

Please contact our office for information on requirements and credit amounts at 586-1824.

Let us help pay for your new electric appliances and motors.

U.S. farmers feed the world: We remind them about electrical safety this planting season

As planting season nears, here are some agriculture-related facts from the American Farm Bureau Federation:

- Each year, one U.S. farm feeds 166 people domestically and abroad. The global population is expected to increase by 2.2 billion by 2050. This means that the world's farmers will have to grow approximately 70% more food than what they produce today.
- Two million farms dot America's rural landscape, according to the AFBF, and 98% are operated by individuals, families and family-run partnerships or corporations.
- Eighty-six percent of U.S. agricultural products are produced on family farms or ranches.
- Americans throw away approximately 25% of the food they buy to eat at home.
- Women make up 36% of the total number of farm operators in the U.S.; 56% of all farms have at least one female decision-maker.

As farmers return to their fields this spring, be alert to the dangers of working near overhead power lines. Follow these safety tips:

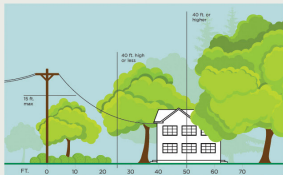
- Determine power line locations before going out into the fields, and designate preplanned routes that avoid hazardous areas.
- Be aware of increased height when loading and transporting tractors on trailer beds. Be cognizant of tall antennas.
- Avoid raising the arms of planters or cultivators or raising truck beds near power lines.
- Do not attempt to raise or move a power line to clear a path.
- Coming too close to a power line while working can be just as dangerous as contacting one since electricity can arc or "jump" to conducting material or objects.
- Non-metallic materials, such as lumber, tree limbs, tires, ropes and hay, will conduct electricity depending on dampness, dust and dirt contamination.
- When grounded wires that stabilize poles, known as guy wires, are broken, they become hazardous. If you hit a guy wire and break it, call the utility to fix it. Do not do it yourself.
- When it comes to dealing with electrical poles and wires, always call the electric utility.
- If your equipment contacts a power line, stay in the cab and call 9-1-1 or the utility for help. Warn others who may be nearby to stay away and wait until the electric utility arrives.
- If leaving the cab is necessary, as in the case of fire, the proper action is to jump — not step — with both feet hitting the ground at the same time. Hop away from the area as far as you can, keeping both feet together as you hop. If you are unable to hop, then shuffle with the insides of your feet touching. Do return to the equipment until the power has been deenergized.

Managers and owners should make sure family members and staff, including seasonal workers, are educated on these safety precautions. Dangerous areas need to be thoroughly identified and labeled.

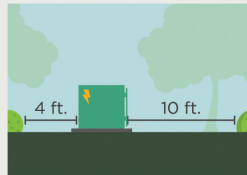
3 Ways to Help Limit Tree Trimming

Did you know electric utilities are required to trim trees and other types of vegetation that grow too close to overhead power lines? We know you love your trees, and we will do everything we can to avoid trimming them. Here's how you can help:

1. Plant trees in the right place. Trees that will be <40 ft. should be planted at least 25 ft. away from power lines (>40ft. should be at least 50 ft. away).



2. Don't block pad-mounted transformers. Plant shrubs at least 10 ft. away from transformer doors and 4 ft. from transformer sides.



3. Report dangerous branches. If you spot a tree or branch that is dangerously close to power lines, please let us know.



Trimming improves safety for all. Let's work together to enjoy the beauty of trees and reliable electricity.

8N Tree Service will be working in our service area again this spring trimming trees out of our lines. If you have trees that appear to be growing into power lines, contact us. Never prune them yourself. Specialized tree trimmers who are certified in utility clearance are the only persons legally allowed to trim within 10 feet of power lines. The majority of power outages are caused by trees that interfere with power distribution.

NEED NEW LAWN EQUIPMENT? CONSIDER GOING ELECTRIC



BENEFITS OF GOING ELECTRIC

If it is time to replace yard equipment, going electric has many benefits.

If you are considering buying a battery-powered mower or a corded or battery-powered trimmer, edger or leaf blower, there are not only more options available now than in recent years, but improvements have been made to run times, features, quality and service life.



ADVANTAGES INCLUDE:

- Going green (pardon the pun): Electric devices do not emit byproducts that damage the environment.
- Less smell: There are no emissions, which means no exhaust odor.
- More free time: There is no need to buy and change the oil, spark plugs and air filters.
- Less noise: Electric yard tools and mowers can be quieter than gas-powered ones.
- Ease of use: Simply plug in or charge to use. Some brands offer battery continuity between devices.
- Less weight: Corded electric devices are often lighter than gas-powered equipment.

Learn more at:

SafeElectricity.org

Mexican Tater Tot Casserole

- 1 lb ground beef
- 1 small onion, diced
- 1 clove garlic, minced
- 1 (4 oz) can diced green chiles
- 1 (1 oz) package taco seasoning mix
- 1 (15 oz) can black beans, rinsed & drained
- 1 (12 oz) package corn
- 3 cups shredded Mexican blend cheese
- 1 (28 oz) package frozen tater tots
- 1 (10 oz) can red enchilada sauce
- Toppings-olives, cilantro, sour cream, tomatoes

Preheat oven to 375 degrees and spray 9x13 baking dish with cooking spray.

In a large skillet, brown beef and the onion. Add the garlic towards the end of the browning process and cook for 1 minute. Drain.

Add the green chiles, taco seasoning mix, black beans, corn and 2 cups of cheese. Stir together to combine.

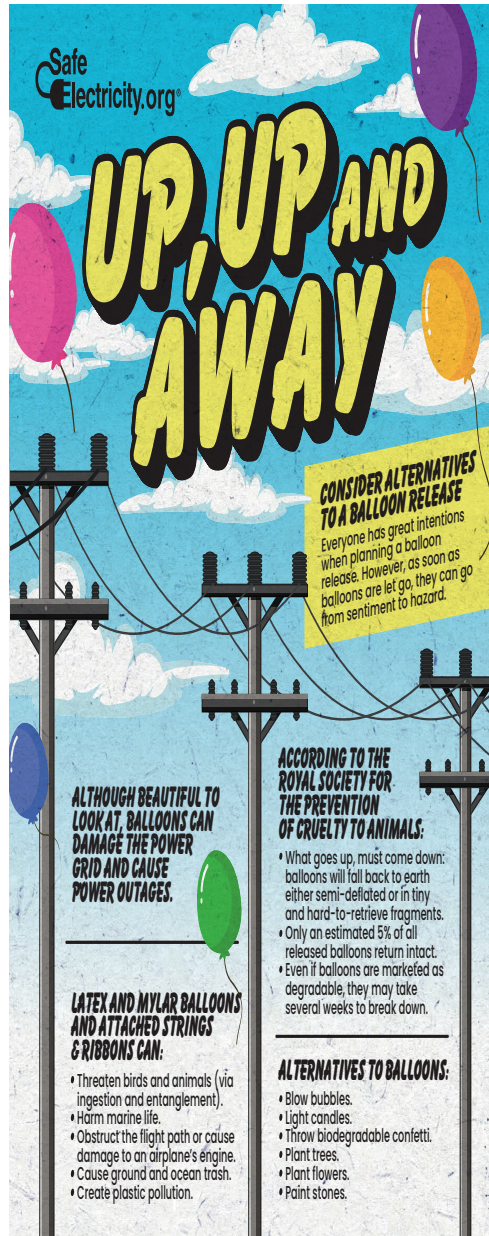
Pour mixture into pan. Arrange tater tots on top of mixture in a single layer.

Pour enchilada sauce on top of casserole. Bake uncovered for 30-40 minutes. Sprinkle remaining cheese on top & bake for another 2-3 minutes until cheese is melted.

ENERGY EFFICIENCY
TIP OF THE MONTH

Lengthen the life of your clothes dryer with regular cleaning. Clean the lint filter after every load, which improves air circulation and safety. Check the lint trap opening to ensure it's clean. Use a vacuum to remove any lint that's fallen inside the opening.

If you use dryer sheets, check the lint filter for residue buildup. Remove any residue with hot water and a nylon brush or toothbrush. Over time, dryer sheets can leave a film on the filter, which can affect the performance of the motor.



Years of Service Award

Journeyman Lineman, Bryce Hargens was recently recognized for five years of service at Chimney Rock Public Power.

Bryce attended Western Nebraska Community College's Powerline Construction and Maintenance program. He completed his internship with Chimney Rock PPD and was then hired as a lineman. Congratulations Bryce on your 5 years of service.

Pictured is Bryce receiving his service award from Manager Curtis Kayton and Board President Kevin Stuart.



**Chimney Rock
Public Power District**
128 W 8th St.
P O Box 608
Bayard, NE 69334

Board of Directors

President

Kevin Stuart

Vice-President

Travis Petersen

Secretary/Treasurer

Corey Henkel

Larry Fiscus

Richard Kildow

Stan Propp

General Manager

Curtis Kayton

Staff

Shauna Abbott

Jacob Ashmore

Tina Douglas

Joel Duffield

Shecky Francisco

Bryce Hargens

Ron Hubbard

DJ Kearns

Justin McAllister

Dalton Propp

Tanner Rafferty

Brandon Wyckoff

During normal office hours

and after hours call:

(308) 586-1824 or

(877) 773-6300

March Board Meeting:

March 20th - 9:00 am

This institution is an equal opportunity provider and employer.